

PAID PUBLIC NOTICE
BEDFORD TOWNSHIP



12/15/08
MEN

ORDINANCE NO. 44A-269

An Ordinance to amend Bedford Township Ordinance No. 44, the Zoning Ordinance of the Township of Bedford, by changing the zoning district classification of the premises herein.

The Township of Bedford, County of Monroe, State of Michigan hereby ORDAINS:
Section 1: That Bedford Township Ordinance No. 44, the Zoning Ordinance of The Township of Bedford, is hereby amended in the following particulars:

That the portions of property hereinafter described and now zoned as R-2B, One-Family Residential District, and C-2, Shopping Center Business District are changed to PBO, Professional and Business Office District, RM-2, Multiple-Family Residential District, RM-E, Elderly Housing Residential District, and C-3, General Business District, and that the zoning map of the Township of Bedford is changed accordingly. Said property is further described as follows:

Parcel Number 58-02-0027-059-40:

Parcel Number 1. Currently R-2A, One-Family Residential District and C-2, Shopping Center Business District, is Changed to PBO, Professional and Business Office District.

Being the approximate southwesterly 4.16 acres of parcel number 58-02-027-059-40, beginning at the centerline of Sterns Road, and continuing north an approximate distance of 375 feet along the east plat line of Indian Acres Subdivision and then east a distance of approximately 535 feet, and then south a distance of approximately 375 feet, and then west a distance of approximately 535 feet to the point of beginning, and further identified as parcel number 1 on the following map.

Parcel Number 2. Currently R-2A, One-Family Residential District, is Changed to RM-2, Multiple-Family Residential District.

Being the approximate westerly 4.40 acres of parcel number 58-02-027-059-40, beginning approximately 375 feet north from the centerline of Sterns Road, and continuing north an approximate distance of 675 feet along the east plat line of Indian Acres Subdivision, and then east a distance of approximately 286 feet, and then south a distance of approximately 675 feet, and then west a distance of approximately 286 feet to the point of beginning, and further identified as parcel number 2 on the following map.

Parcel Number 3. Currently Zoned R-2A, One-Family Residential District, is Changed to RME, Elderly Housing Residential District.

Being the approximate northwesterly 4.40 acres of parcel number 58-02-027-059-40, beginning approximately 1,050 feet north from the centerline of Sterns Road, and continuing north an approximate distance of 675 feet along the east plat line of Indian Acres Subdivision, and then east a distance of approximately 286 feet, and then south a distance of approximately 675 feet, and then west a distance of approximately 286 feet to the point of beginning, and further identified as parcel number 3 on the following map.

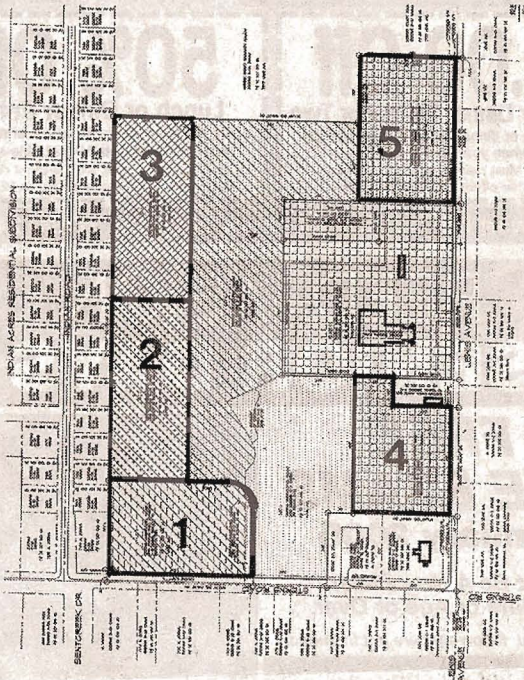
Parcel Number 4. Currently Zoned C-2, Shopping Center Business District, is Changed to C-3, General Business District.

Being the approximate southeasterly 3.59 acres of parcel number 58-02-027-059-40, beginning approximately 275 feet north from the southeast corner of section 27, T8S, R7E, and continuing west an approximate distance of 385 feet, and then north a distance of approximately 500 feet, and then east a distance of approximately 385 feet, and then south a distance of approximately 500 feet to the point of beginning, and further identified as parcel number 4 on the following map.

Parcel 5. Currently Zoned C-2, Shopping Center Business District, is Changed to C-3, General Business District.

Being the approximate northeasterly 3.27 acres of parcel number 58-02-027-059-40, beginning approximately 1,425 feet north from the southeast corner of section 27, T8S, R7E, and continuing west an approximate distance of 300 feet, and then north a distance of approximately 542.95 feet, and then east a distance of approximately 300 feet, and then south a distance of approximately 542.95 feet to the point of beginning, and further identified as parcel number 5 on the following map.

Section 2. The following map is a copy of an exhibit dated June 12, 2008 and submitted to the Township on August 8, 2008, as an attachment to the property owner's application for rezoning:



Section 3. This Ordinance shall become effective eight days after publication of a Notice of Adoption in a newspaper of general circulation in the Township of Bedford, Monroe County, Michigan, unless otherwise provided by law.
Section 4. A copy of the Zoning Ordinance and this Amendment to the Zoning Ordinance may be purchased or inspected at the Bedford Township Hall, 8100 Jackman Road, Temperance, Michigan, during normal business hours which are generally, Monday through Friday, 8:00 a.m. to 5:00 p.m.

BY ORDER OF THE TOWNSHIP BOARD BEDFORD TOWNSHIP, MONROE COUNTY, MICHIGAN

By
Robert A. Schockman, CMC,
Bedford Township Clerk

AUTHENTICATED:
Walter C. Wilburn,
Supervisor

DATE ADOPTED: December 2, 2008
DATE PUBLISHED: December 15, 2008
DECEMBER 15, 2008