

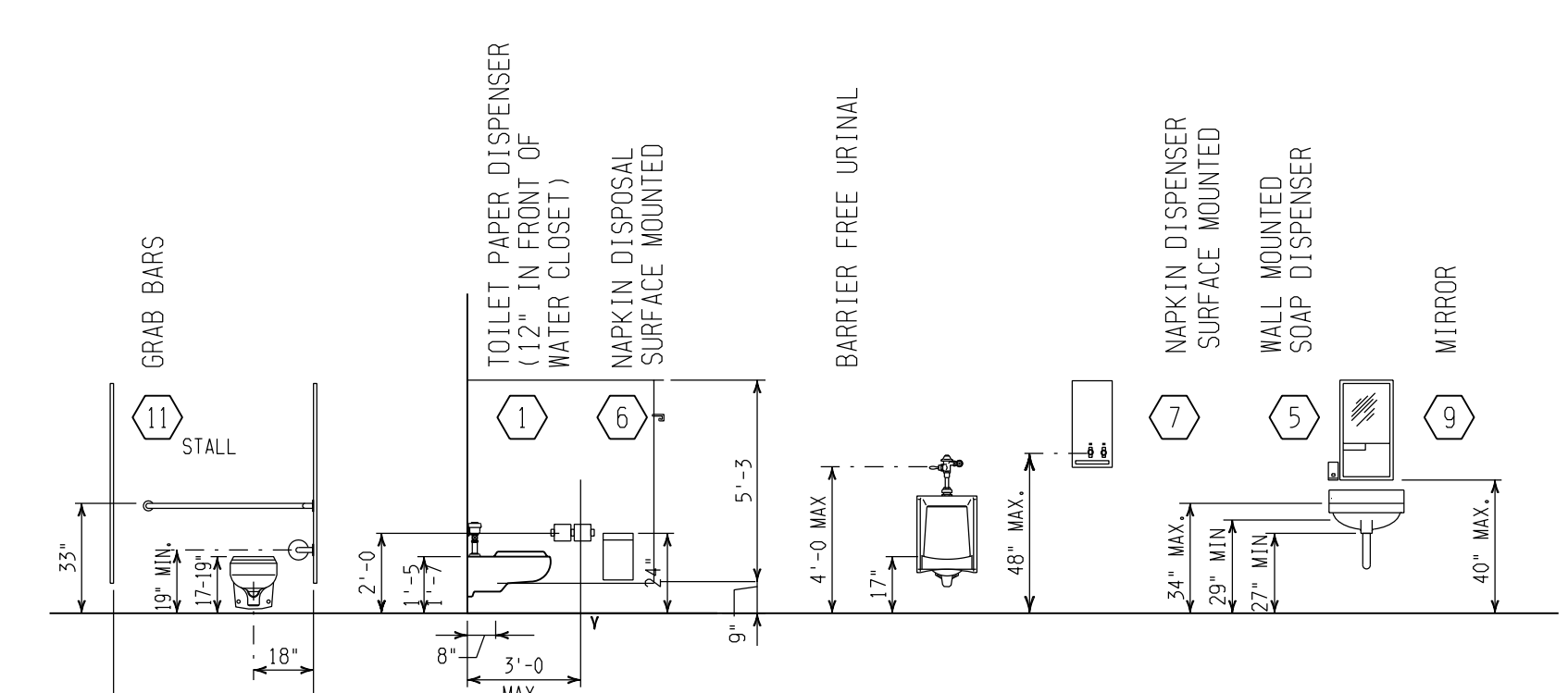
ARCH.	MACH. DESGN.
CHEM.	MECH.
CIVIL	PROCESS
ELEC./CTL.	SPEC.
ELEC.	STRUCT.

DOOR SCHEDULE

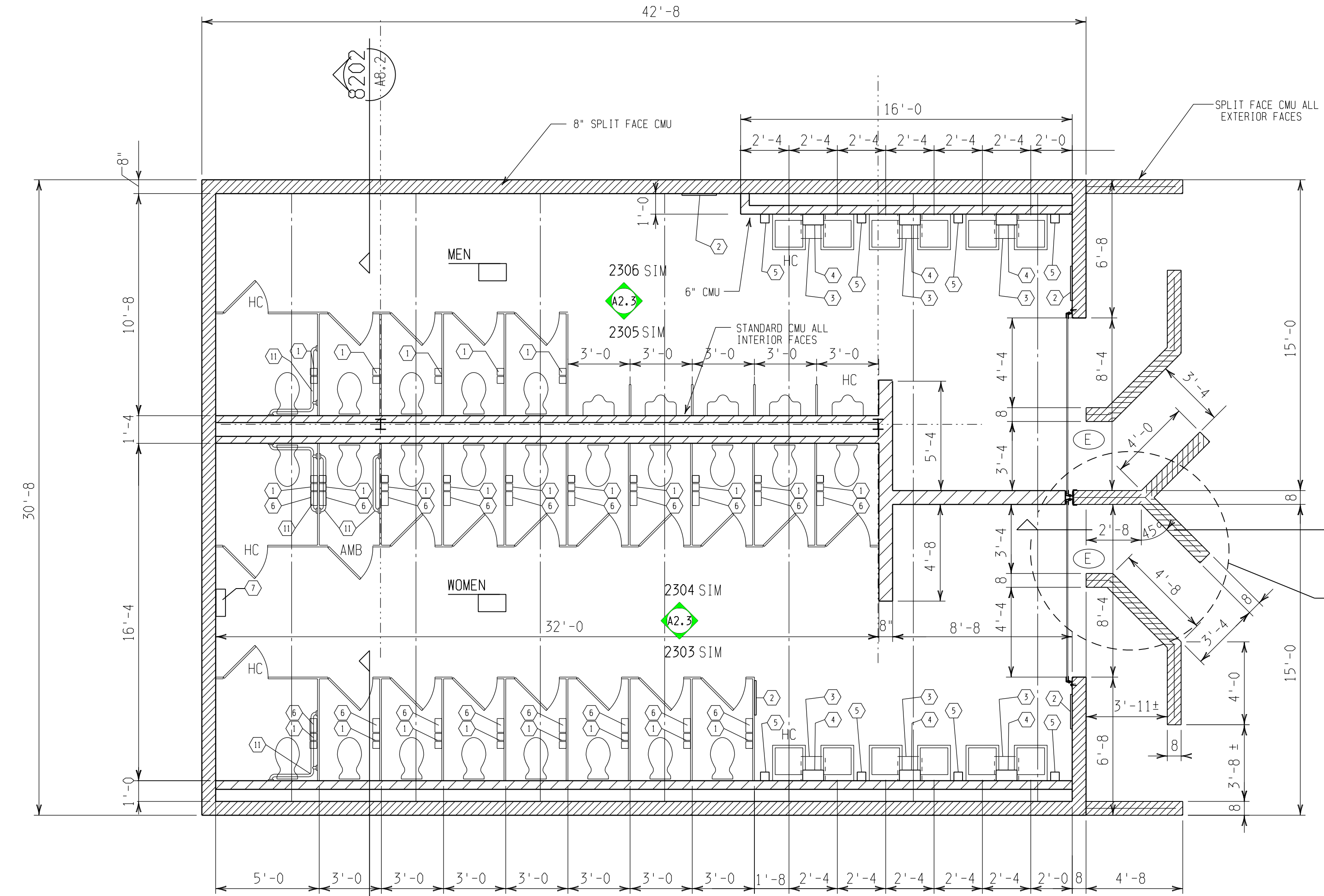
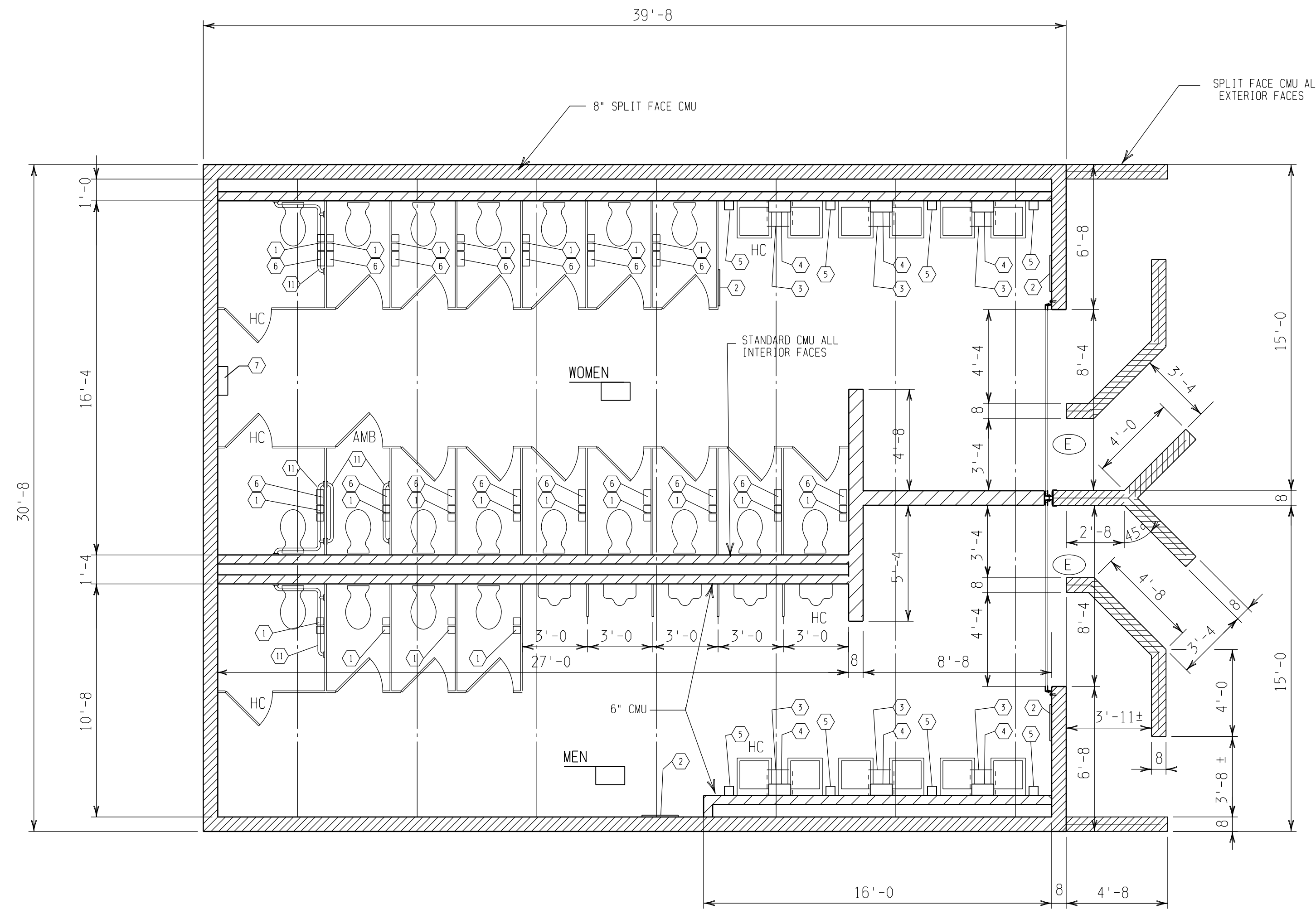
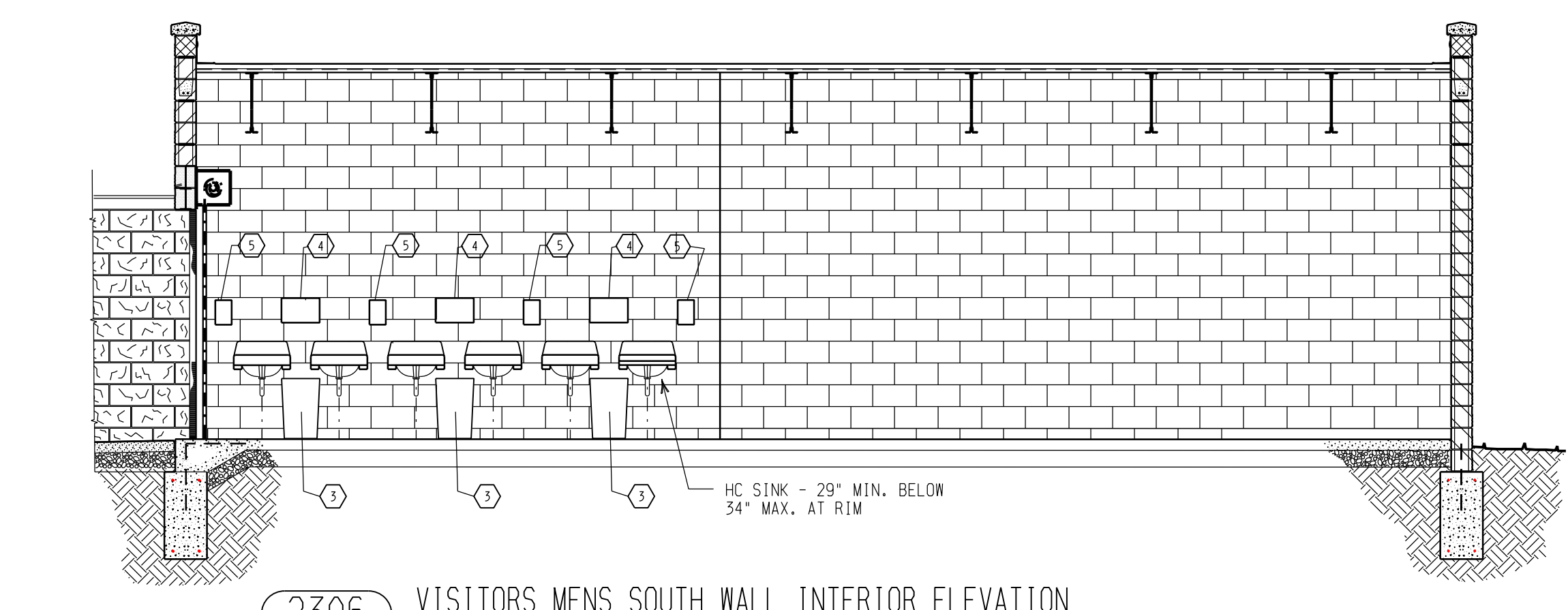
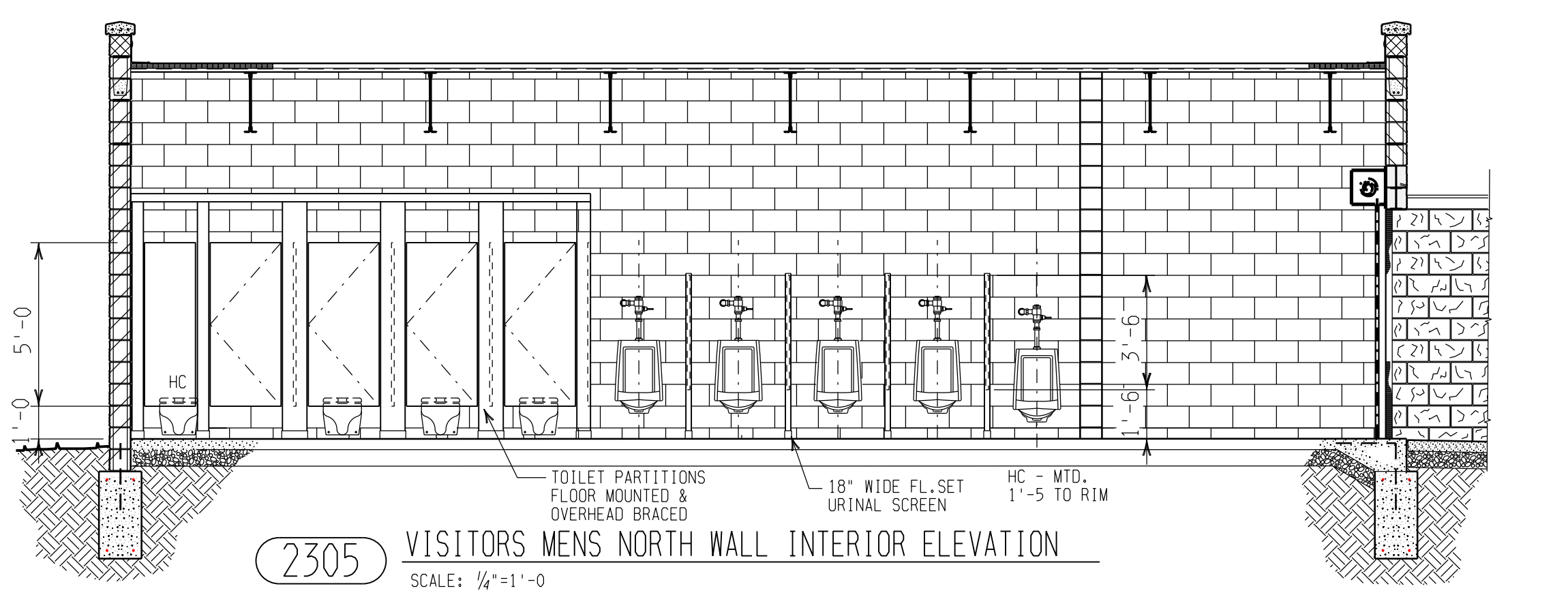
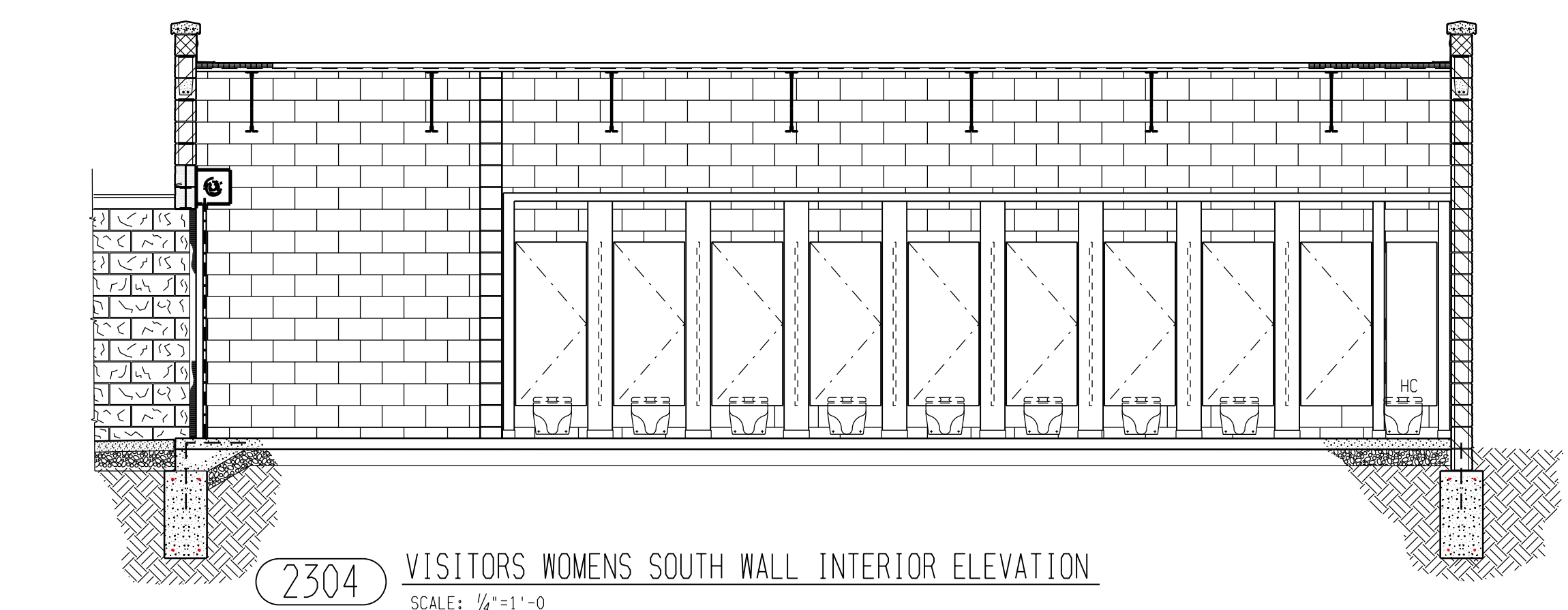
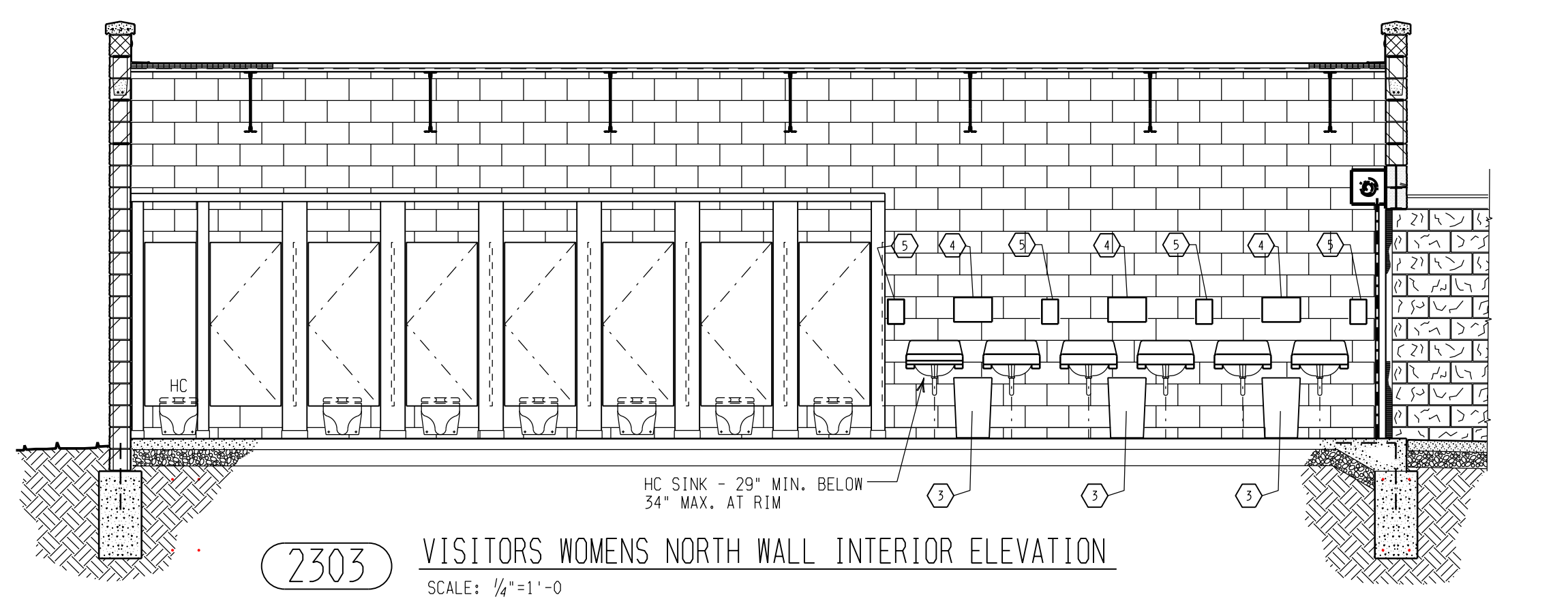
MARK	SIZE	DOOR MAT'L	FRAME MAT'L	LABEL	LOUVER	HOW ITEM	REMARKS
A	3'-0" x 6'-8" x 1 3/8"	HM	HM			1	4" FRAME @ HEAD 1ST-FL. SHT. AG-1
A-1	3'-0" x 6'-8" x 1 3/8"	HM	HM		12"x24"	2	4" FRAME @ HEAD
B	3'-0" x 6'-8" x 1 3/8"	HM	HM			3	
C	6'-6" x 4'-0" (SLATS)	ALUM	ALUM			4	FLAT SLAT FRAME SCREEN IN FRONT
D	6'-6" x 7'-0" (SLATS)	ALUM	ALUM			5	FLAT SLAT SILL SIM. SECTION 8203/AB.3
E	8'-4" x 7'-0" (SLATS)	STL	STL			6	FLAT SLAT
F	8'-0" x 8'-0" x 1 3/8"	STL	STL			7	SIM. TO RAYBOR 5-24 FIELD FINISH PAINTED SILL SIM. SECTION 8203/AB.5
G	8'-0" x 8'-0" x 1 3/8"	STL	STL			8	SIM. TO RAYBOR 5-24 FIELD FINISH PAINTED SILL SIM. SECTION 8203/AB.5
H	3'-0" x 6'-8" x 1 3/8"	HM	HM			9	
J	5'-4" x 8'-0" x 1 3/8"	STL	STL			10	SIM. TO RAYBOR 5-24 FIELD FINISH PAINTED
K	4'-0" x 7'-0" x 1 3/8"	HM	HM			11	4" FRAME @ HEAD

TOILET ACCESSORIES SCHEDULE

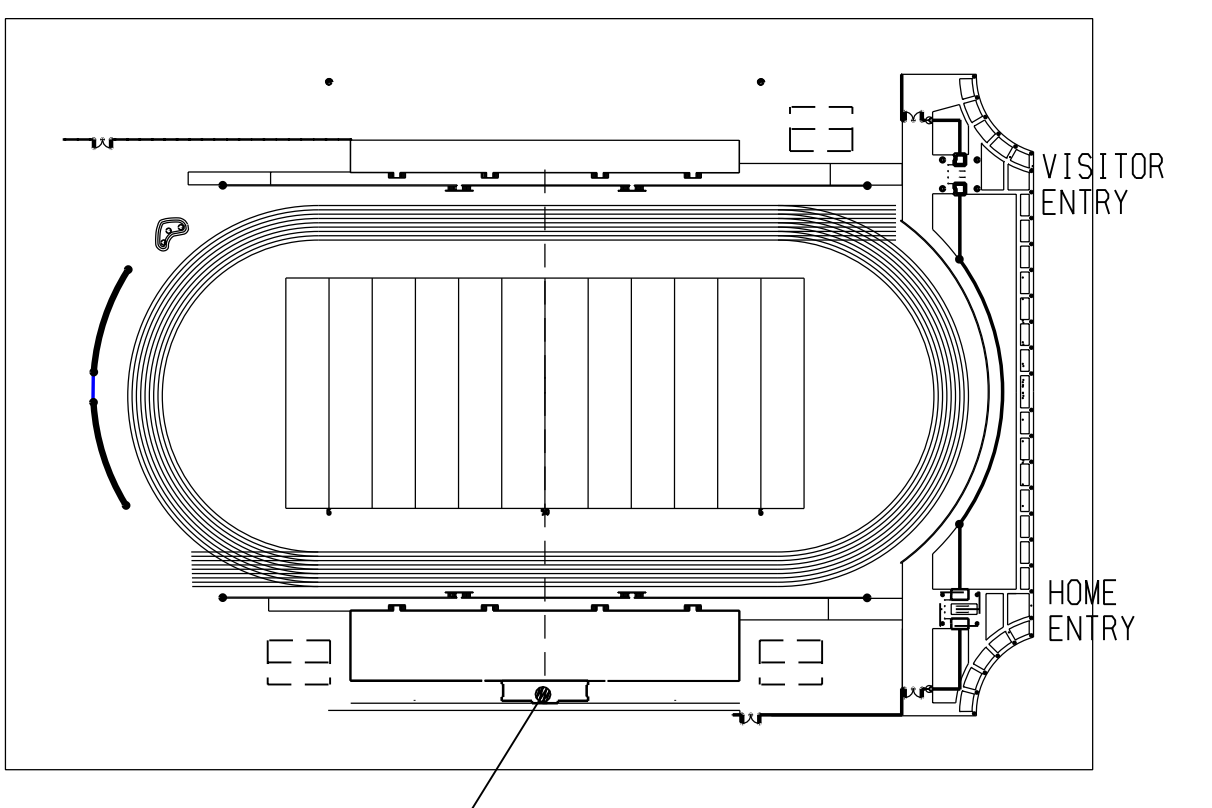
- 1 TOILET PAPER HOLDER EACH STALL (BY OWNER)
- 2 1'-8" x 5'-0" MIRROR
- 3 12 1/2" x 12 1/2" x 22" HIGH WASTE RECEPTAL (BY OWNER)
- 4 PAPER TOWEL DISPENSER (BY OWNER)
- 5 SOAP DISPENSER (BY OWNER)
- 6 NAPKIN DISPOSAL
- 7 NAPKIN/TAMPON DISPENSER
- 8 16" x 30" TILTING MIRROR
- 9 16" x 30" MIRROR
- 10 24" MOP & BROOM HOLDER SIM. TO BOBRICK B-223 x 24
- 11 1 1/2" STAINLESS STEEL GRAB BARS



NOTE: INSTALLATION MUST COMPLY W/ ALL GOVERNING CODES INCLUDING AMERICANS WITH DISABILITIES ACT (ADA-1992) FOR FIXTURE HEIGHT.



8203 AB.2
8204 AB.2



NO.	DATE	SUBJECT
	8/12/97	REVISED
	6/12/97	ISSUED FOR BIDS - CONC. MAS.
	5/12/97	ISSUED FOR UNDERGROUND BIDS
	4/28/97	REVISED PLAN
	2-6-97	ISSUED FOR BIDS - STADIUM
	1-8-97	ISSUED FOR BIDS - GRANDSTANDS
	11-12-96	FINAL OWNERS REVIEW
	11-12-96	FINAL CHECK

NO.	DATE	SUBJECT

SSOE, INC.
ENGINEERS ARCHITECTS
1001 MADISON AVENUE TOLEDO, OHIO 43624
FAX 419-255-6101 TEL. 419-255-3850

JOB TITLE
Bedford Community Sta
8285 JACKMAN RD. TEMPERANCE, MICHIGAN
a project by
The Bedford High School Bedford Township
Alumni Association Community
Bedford Public Schools
1623 STERNS RD., TEMPERANCE, MICHIGAN 48164-9756

DRAWING TITLE
1/4" FLOOR PLANS
TOILET ROOM BUILDINGS

PROJECT NUMBER 96-1299
DRAWING NUMBER A2.3

Vertical text on the right edge containing drawing codes and sheet information.